

# ASSOCIATE OF APPLIED SCIENCE IN ELECTRICAL TECHNOLOGY 2020-2021

FRESHMAN YEAR   FALL	CREDITS	COMPLETED
CAPP 120 Intro to Computers	3	<input type="checkbox"/>
ELCT 101 Electrical Fundamentals I with Lab	3	<input type="checkbox"/>
ELCT 103 Electrical Code Study/Codeology	3	<input type="checkbox"/>
ELCT 106 Electrical Formulas and Calculations	3	<input type="checkbox"/>
ELCT 137 Blueprint Reading	2	<input type="checkbox"/>
<b>CATEGORY I: Communication</b>		
WRIT 101L College Writing I with Lab	3/4	<input type="checkbox"/>

TOTAL CREDITS 17-18

SOPHOMORE YEAR   FALL	CREDITS	COMPLETED
<b>CATEGORY I: Communication</b>		
COMX 115 Intro to Interpersonal Communication	3	<input type="checkbox"/>
ELCT 201 Alternating Current Theory with Lab	3	<input type="checkbox"/>
ELCT 205 Electrical Design and Lighting	3	<input type="checkbox"/>
ELCT 211 AC Measurements with Lab	3	<input type="checkbox"/>
ELCT 233 Commercial Wiring with Lab	3	<input type="checkbox"/>
ELCT 239 Grounding and Bonding Fundamentals with Lab	3	<input type="checkbox"/>

TOTAL CREDITS 18

FRESHMAN YEAR   SPRING	CREDITS	COMPLETED
ELCT 102 Electrical Fundamentals II with Lab	3	<input type="checkbox"/>
ELCT 111 Electric Meters and Motors with Lab	3	<input type="checkbox"/>
ELCT 133 Basic Wiring with Lab	5	<input type="checkbox"/>
ELCT 139 Electrical Code Study - Residential	3	<input type="checkbox"/>
<b>CATEGORY II: Mathematics</b>		
M 105 Contemporary Mathematics	3/4	<input type="checkbox"/>

TOTAL CREDITS 17-18

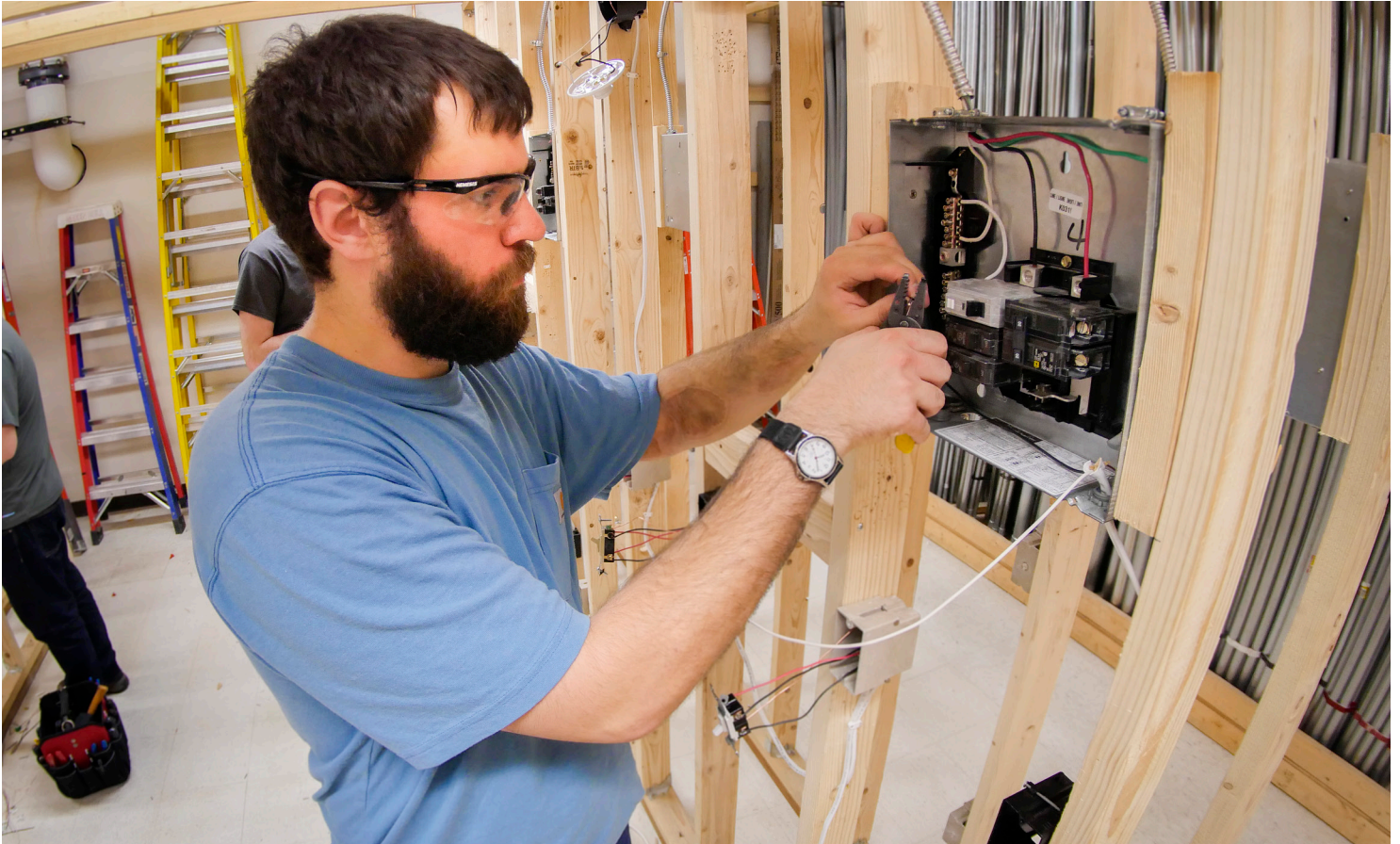
SOPHOMORE YEAR   SPRING	CREDITS	COMPLETED
ELCT 204 Electrical Planning and Estimating	3	<input type="checkbox"/>
ELCT 230 Industrial Electrical Wiring with Lab	3	<input type="checkbox"/>
ELCT 236 Conduit, Raceways and Code Calculations with Lab	3	<input type="checkbox"/>
ELCT 241 Electric Motor Controls with Lab	3	<input type="checkbox"/>
HE 234 First Aid and CPR	2	<input type="checkbox"/>
IT 111 Industrial Safety/Waste Management	2	<input type="checkbox"/>

TOTAL CREDITS 16



**15 TO FINISH**

# THE VALUE OF YOUR ELECTRICAL TECHNOLOGY DEGREE



MSU-Northern's Electrical Technology program is the only program in the state to offer an Associate of Applied Science in conjunction with the State of Montana Apprenticeship program.

Additionally, the electrical program offers apprentices the opportunity to learn in hands-on courses, and covers a major portion of the academic requirements of an apprenticeship. As a result, up to 3,115 hours can be applied toward the total 8,000 required apprenticeship hours, and graduates are prepared to start their career with a firm foundation of knowledge and skill. Opportunities for you include careers in engineering consulting, electrical distribution and sales, electrical estimating, electrical maintenance and construction, or as a self-employed electrician. Bureau of Labor Statistics show that employment of electricians will grow faster than the average of all occupations through the year 2020.

## 15 TO FINISH

### WANT TO GRADUATE ON TIME? SAVE MONEY? GET BETTER GRADES?

# 15

You're going to need 15. That's the number of credits you need to take each semester to graduate on time. Sure, you can take less and still receive some scholarships and funding. But unless you take 15 credits a semester (or 30 a year), you're looking at an extra year or more in order to graduate. Know the courses you need to graduate, and meet with your advisor to map out a plan to earn your degree on time.